



# Simply Better

COLLECTION



2026 COLLECTION

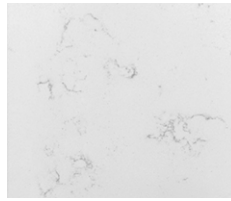


# QUARTZ COLLECTION

## Group 0



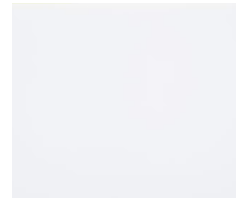
Carrara Roma (D)



Carrara Pisa (D)



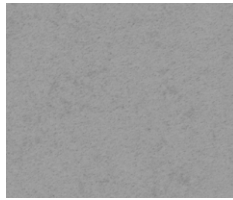
Blanco Maple (S)



Miami White (S)



Marfa (W)



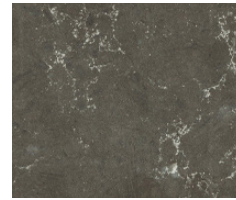
San Angelo (W)



Terlingua (W)



Urban Cloud (W)

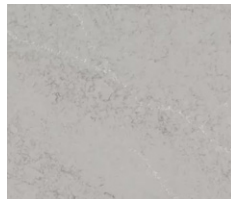


Hanola Grey (W)

## Group 1



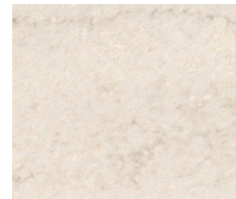
Calacatta Forte (W)



Cloudbreak (W)



Vienna Canyon (W)



Bregava (W)



Permian Slate (W)



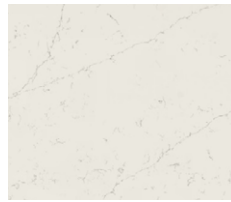
Mountain Carrara (W)



Carrara Codena (W)



Siberian (S)



Persian White (S)



Linen Cream (S)



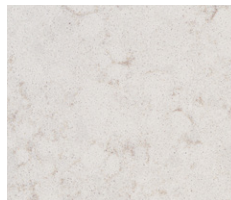
Bianco Calacatta (S)



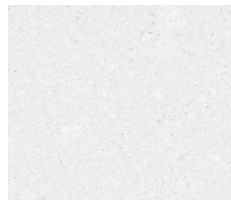
Calacatta Grande (V)



Morning Frost (D)



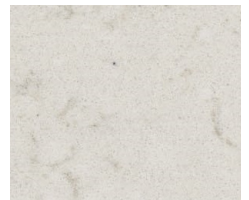
Golden Gate (D)



Coronado White (D)



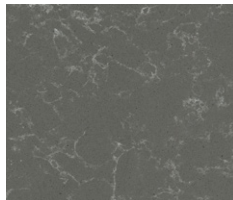
Italian Waves (H)



Aspen (H)



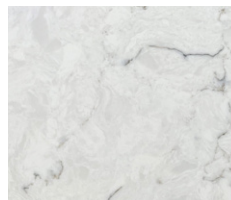
Fusion (H)



Concrete Carrara (C)



Greige Stone (E)

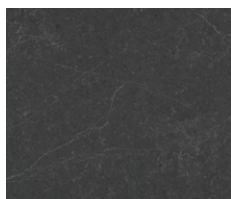


Toffee Lite (P)

## Group 2



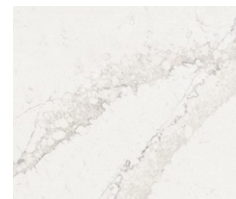
Icelandic Mist (Matte) (W)



Charcoal Peak (W)



River Glen (W)



Calacatta Themis (S)



Bronze Rivers (S)

# QUARTZ COLLECTION

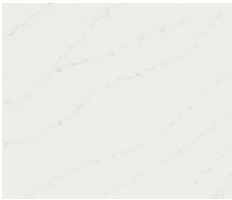
## Group 2 Cont.



Calacatta Tova (S)



Antello (H)



Tranquility (H)



Cremosa (Leather)  
(H)



Cremosa (Polished)  
(H)



Markina (H)



Macaubas Bianco (V)



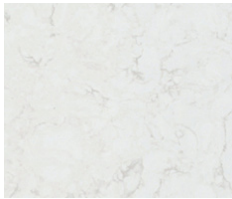
Aria (V)



Clarino (V)



Everest (V)



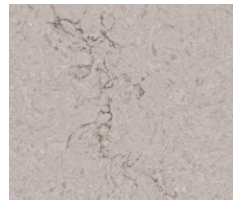
Minuet (V)



Ethereal White (C)



Calacatta Villa (C)



Calacatta Odyssey  
(D)



Marin (E)



Sonora (E)



Omega White (P)

## Group 3



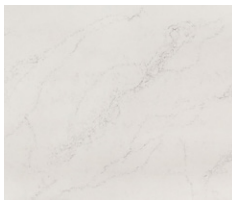
Desert Wind (W)



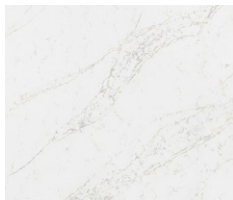
Calacatta Gold (H)



Calacatta Extra (H)



Montauk (H)



Lumina (V)



Adagio Gold (V)



Cloud Ridge (V)



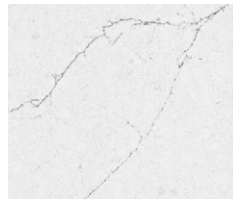
Splendor (V)



Astoria (D)



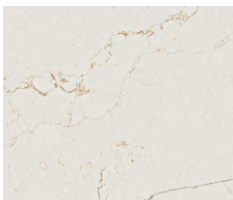
Sedona (D)



Valor White (D)



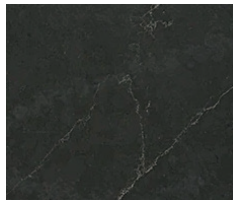
Valor Gold  
(Polished) (D)



Valor Gold  
(Lava) (D)



Noble Grey  
(Lava) (D)



Broadway Black  
(Polished) (D)



Broadway Black  
(Velvet) (D)



# QUARTZ COLLECTION

## Group 4



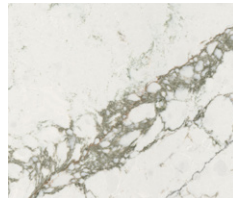
Calacatta Volegno (W)



Calacatta Olympos (W)



Glencoe (W)



Verde Peak (W)



Nevis Ridge (W)



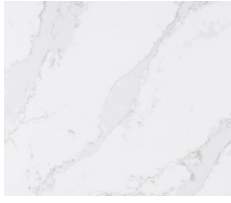
Elba White (H)



Le Blanc (H)



Matterhorn (H)



Eternal Calacatta Gold (S)



Calacatta Sol (V)



Calacatta Plata (V)



Calacatta Bolt (D)

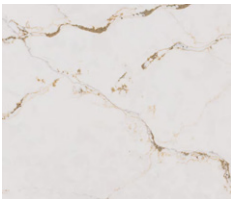
## Group 5



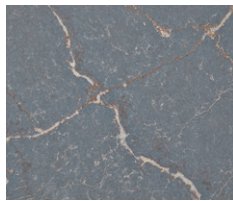
Sapphire Rift (W)



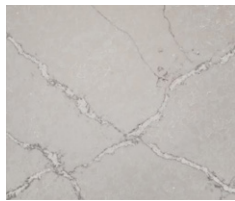
Alabaster Terrazzo (C)



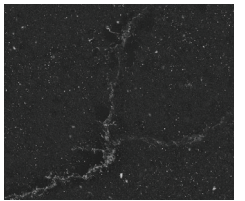
Versailles Ivory (S)



Parisien Bleu (S)



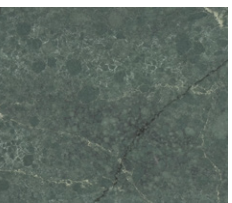
Victorian Silver (S)



Romantic Ash (S)



Blanc Élysée (S)



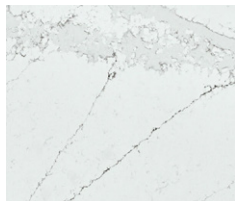
Jardin Emerald (S)



Ethereal Glow (S)



Ethereal Noctis (S)



Ethereal Haze (S)



Eclectic Pearl (S)

Pictures are representations of the color only; it is recommended that a physical sample be viewed when making a final selection.

(W) **Wilsonart**

(E) **ENVI**

(P) **PACIFIC**  
QUARTZ SURFACES

(S) **silestone**  
Designed by COSENTINO

(H) **HanStone**

(D) **daltile**

(C) **CORIAN** QUARTZ

(V) **Viatera**  
Quartz Surface

Interested in additional designs from these brands? Reach out for a custom estimate!

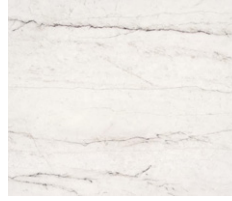
# INLAYERED MINERAL SURFACES

**ÉCLOS<sup>®</sup>**  
by COSENTINO

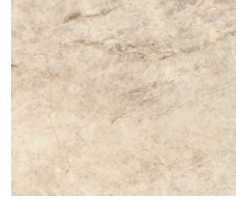
**Introducing in 2026: Éclos<sup>®</sup> by Cosentino, a brand new category of mineral surfaces.**

- Inlayr<sup>®</sup> technology creates a surface with a 3D design integrated into the edges, with realistic aesthetics and a natural touch and feel that redefine industry standards.
- The collection has zero crystalline silica in its formulation. Furthermore, all colors use a minimum of 50% recycled materials, while several colors incorporate almost 90% recycled materials.
- Offers superior heat resistance that can withstand temperatures up to 428°F, making it an ideal solution for kitchen countertops and other high-performance applications.

## Group 6



Ivora (Smooth)



Tajnar (Glossy)

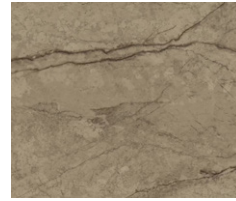


Landr (Glossy)

## Group 7



Phantome (Smooth)



Legnd (Smooth)



Wondr (Glossy)

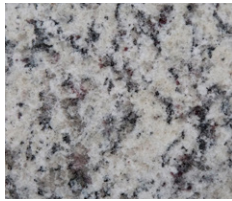
Pictures are representations of the color only; it is recommended that a physical sample be viewed when making a final selection.

# GRANITE

## Group 0



Bengal White



White Napoli

## Group 1



Steel Rock  
(Brushed or Polished)



Black Pearl  
(Brushed or Polished)

Additional granite options can be viewed on our website.



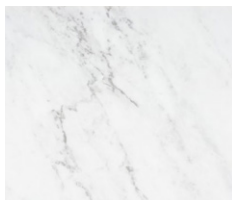
# ULTRACOMPACT SURFACES

## Group 5



Trilium  
(Matte 2CM)

## Group 5



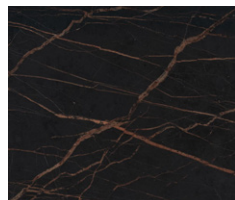
Salina  
(X-Gloss 2CM)

## Group 6



Trevi  
(Matte 2CM)

## Group 6



Laurent  
(Matte 2CM)

  
**DEKTON<sup>®</sup>**  
by COSENTINO



Choosing a sink is easier than ever with our Karran Sink Stocking Program!

You and your customers will enjoy:

- The convenience of ordering the sink with the countertop from a single source
- Expanded in-stock options with more modern and in-demand styles
- Cost savings

For the complete list of Karran sinks, visit [www.karran.com](http://www.karran.com)

## STAINLESS STEEL SINKS



PU51 (5050)

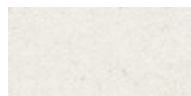


PU53R (6040)



PU55 (Single Bowl)

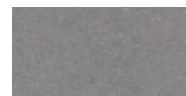
## QUARTZ SINKS



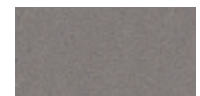
WHITE



BLACK



GREY



CONCRETE



QU-810



QU-811



QU-812

## VANITY SINKS



VC-101



VC-102



VC-105



VC-106

STAINLESS STEEL  
WORK STATIONS

WS-37-PK1



ACCESSORIES INCLUDED | (faucet not included)



QUARTZ WORK  
STATIONS



QUWS-875



WHITE BLACK GREY CONCRETE



ACCESSORIES INCLUDED | (faucet not included)

KITCHEN FAUCETS



SCOTTSDALE  
KKF210



STALBRIDGE  
KKF720



FARADAY  
KKF750



ELMSWORTH  
KKF760



MATTE BLACK



SPOT-FREE  
STAINLESS STEEL



SPOT-FREE  
GUNMETAL GRAY



SPOT-FREE  
BRUSHED GOLD



SPOT-FREE  
CHAMPAGNE BRONZE

VANITY  
FAUCETS



WOODBURN  
KBF414



WOODBURN  
KBF410



WOODBURN  
KBF416



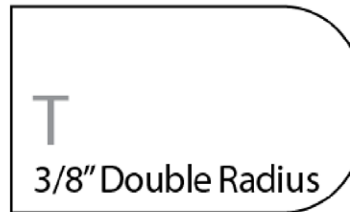
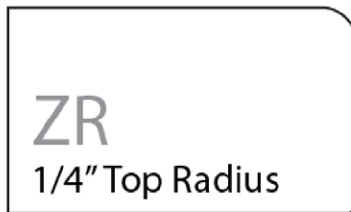
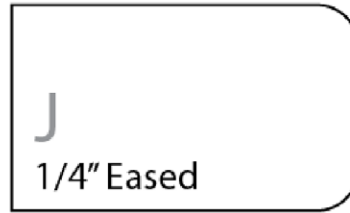
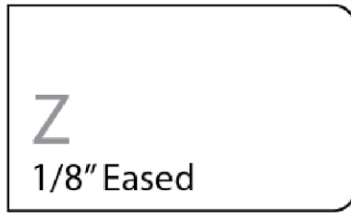
MATTE BLACK



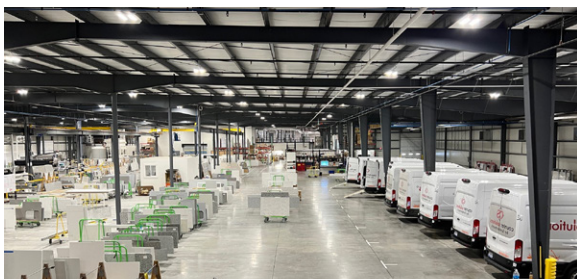
STAINLESS STEEL



# AVAILABLE EDGE PROFILES



Profiles shown are for 3cm thickness only. Edge profiles may vary from images and dimensions are approximate.



**counter solutions®**  
by lumbermen's

Counter Solutions is a division of Lumbermen's that was established in the late 90s as a result of a growing need for a company to offer fabrication, templating and installation of solid surface countertops. Our services have expanded to an 85,000 square foot stone and solid surface fabrication facility in Byron Center, Michigan.

Because Counter Solutions is 100% owned by the employees, you can count on each person having a personal investment in striving to make sure each project is done right every time. It's not just a job, it's a commitment to fellow employee owners as well as the dealers, suppliers and the customers we serve.

**Visit [mycountersolutions.com](http://mycountersolutions.com) for more information on our products and services.**